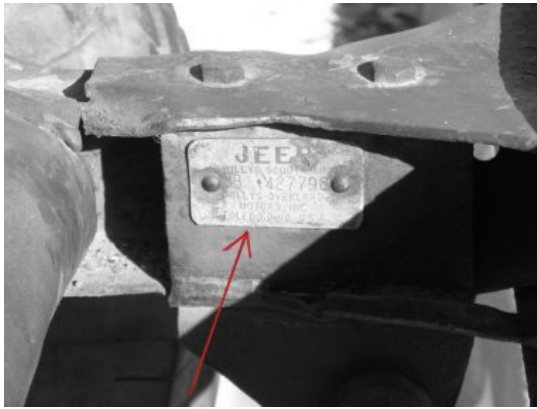
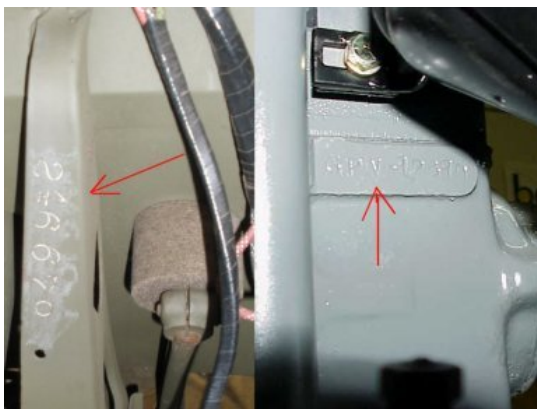


G503 WWII 1944 Willys MB Jeep Finding your Frame number

This article helps you find your 1944 WWII Willys MB Jeep Frame serial number



Your WWII jeep serial number is an important part of finding the history behind your jeep. Each WWII jeep was assigned an individual serial number. On Willys, the frame was riveted with a stamped tag and can be found on the front driver side frame horn. This is your Serial number for your jeep.



Are there other serial numbers?

 Yes! Go to these links to locate your other numbers.

Body/Tub Number
Engine Serial Number